



Installation

1



Check you have all components and cables.

- CMG-3T weak motion broadband seismometer
- Thick grey signal cable
- Sensor calibration data booklet
- Breakout box, if ordered
- Handheld control unit, if ordered

You will need a suitable digitizer or recording equipment, and a 12–24 V DC power supply.

2



Choose a suitable site to install the sensor.
The sensor should be mounted

- at, or ideally below, ground level
- away from sources of natural noise (e.g. wind, surf)
- away from sources of cultural noise (e.g. traffic)
- in contact with bedrock, if possible
- otherwise, on a hard granite or concrete pier
- in an environment with constant temperature
- shielded from air currents (e.g. in a polystyrene box)
- away from electrical cables and appliances

3



Loosen the brass locking nut on one of the adjustable feet.

Turn the foot, screwing it in or out to level the sensor.
Check using the spirit level on the sensor lid.

Repeat with the other adjustable feet, until the bubble in the spirit level lies entirely within the inner circle.

Tighten the brass locking nuts *downwards* to secure the feet.

Unlocking with a breakout box

4



If you are using a breakout box, connect the signal cable between the sensor and the *SENSOR* connector of the breakout box, and connect the *POWER* connector to your 12 V power supply.

Hold down the *ENABLE* button on the side of the box, and press the *UNLOCK* button for a few seconds. The *BUSY* LED will light, and you should be able to hear the internal motors unlocking the masses.

Hold down the *ENABLE* button again, and press *CENTRE* for a few seconds to centre the masses.

Do not attempt to move the sensor whilst it is unlocked. To lock the masses, connect the breakout box and power supply, and hold down *ENABLE* and *LOCK*.

5



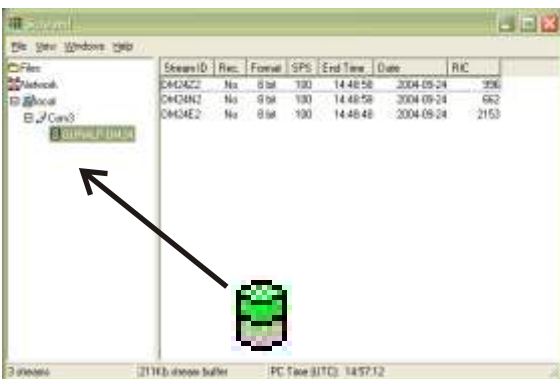
If you have a digitizer or recording equipment which provides power to the sensor (e.g. all Güralp digitizers) disconnect the breakout box and connect the digitizer directly to the sensor.

Otherwise, connect the digitizer or recording equipment to the breakout box's *RECORDER* connector.

Check that the instrument responds to ground movements.

Please refer to the full manual for detailed usage instructions, calibration and troubleshooting.

Unlocking with Scream!



Alternatively, if you are using a Güralp Systems digitizer and Scream! software, you can unlock the sensor masses remotely.

Run Scream! with the digitizer and sensor connected. Look for the digitizer icon on the left side of the window, and right-click on it.

Choose *Control...*, and view the *Mass Control* tab. Click *Unlock*, and wait for the process to complete. Follow with *Centre* if required.