



Installation

1



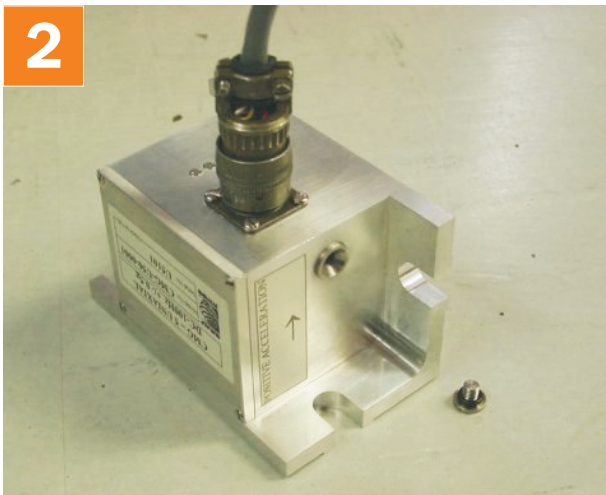
Check you have all components and cables.

- CMG-5U strong motion broadband accelerometer
- Grey signal cable
- Sensor calibration data booklet

You will need a suitable digitizer or recording equipment, a 12–24 V DC power supply, and three M10 or M12 hexagonal bolt screws with washers.

Keep the packaging, in case you need to transport the sensor at a later date.

2



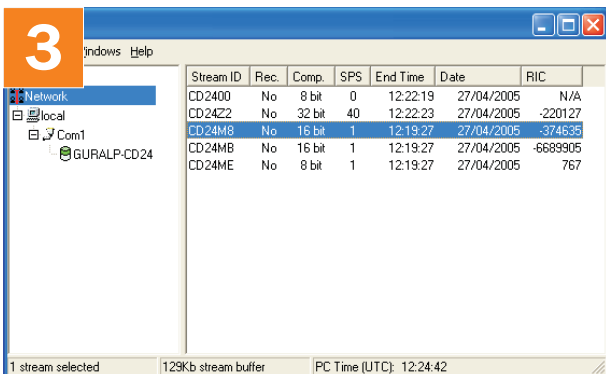
Prepare the installation site. Any sufficiently solid floor or wall will be suitable to install the instrument. You can install the 5U on either horizontal or vertical surfaces.

If installing horizontally, scribe a line of known orientation for mounting the sensor.

Mount the sensor on the surface with the *POSITIVE ACCELERATION* pointing in the desired direction.

Fix the sensor on to the surface with the bolt screws using either set of attachments.

3



After installing, you will need to zero the sensor outputs. This is most easily done through a Guralp digitizer.

Connect the sensor's output port to the digitizer, and power them up. Connect the digitizer's serial output to a PC, and monitor the sensor's output stream.

Remove the screw-on cap protecting the offset adjuster. With a small screwdriver, adjust the offset until the output is close to zero. Zoom in as necessary. Replace the pressure cap.

Please refer to the full manual for detailed usage instructions, calibration and troubleshooting.