



Network installation

1



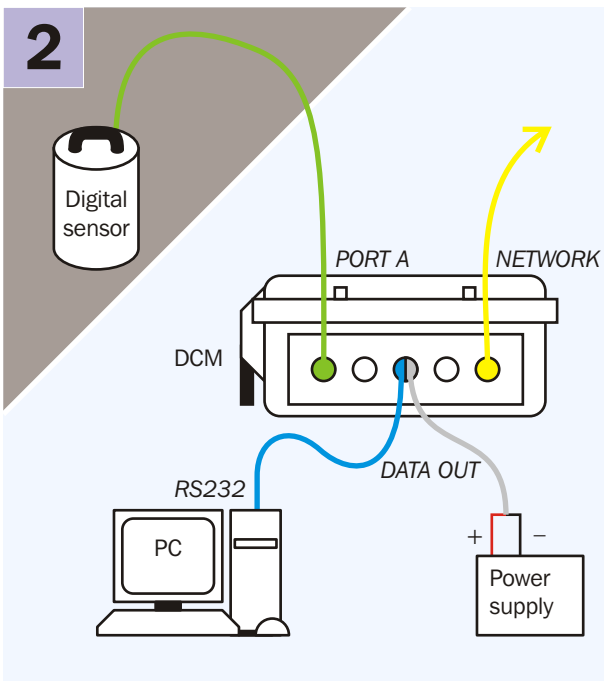
Check you have all components and cables.

- * CMG-DCM module
- * Green digitizer↔DCM cable
- * Blue/grey combined DCM↔PC and power cables
- * Yellow DCM↔Ethernet cable

You will need a Windows or Linux PC with an RS232 (COM) port, a Güralp Systems digitizer or digital sensor and a DC power supply of between 12 and 24 volts.

Choose a suitable location for the DCM.

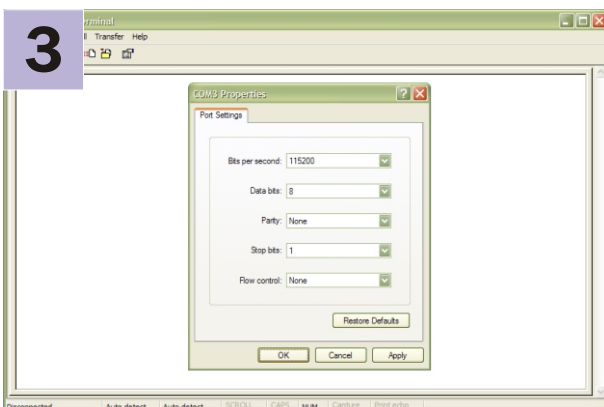
2



Connect the various parts together:

- *Connect the green digitizer cable (signal + power) between the *PORT A* socket on the DCM and the *DATA* connector on the digitizer. Connect a second digitizer or digital sensor to *PORT B* if applicable;
- *Connect the yellow DCM↔Ethernet cable between the *NETWORK* socket on the DCM and your network switch or hub;
- *Connect the 9-pin 'D' connector on the blue cable to your PC's serial (COM) connector;
- *Connect the free, stripped end of the grey cable to the power supply. Connect the black wire to the negative (-) terminal and the red wire to the positive (+) terminal;
- *The blue and grey cables are joined together at a 10-pin mil-spec socket. Attach this to the *DATA OUT* connector on the DCM, and switch on the power supply. *Do this step last.*

3



Run a terminal program, e.g. HyperTerminal, on your PC. Connect to the relevant serial port with these settings:

- * 115,200 baud;
- * 8 data bits;
- * No parity bit;
- * 1 stop bit;
- * No flow control; and
- * vt100 emulation (necessary for `gconfig`).

Press *ENTER* a few times until you get a **login:** prompt.

